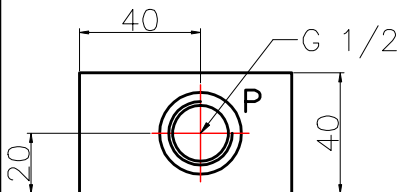


# Einspeiseplatte NG10 G1/2 in P+T

Typ

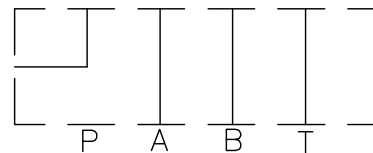
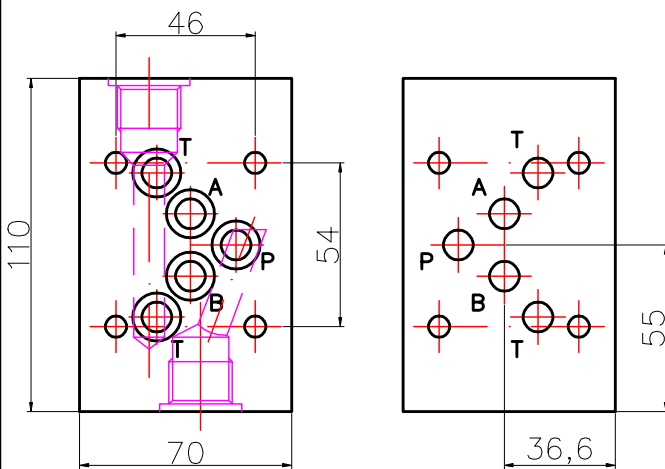
Lochbild DIN 24340 Form A / ISO 4401



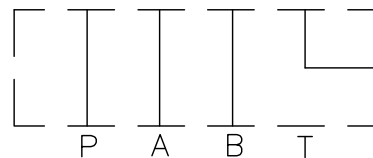
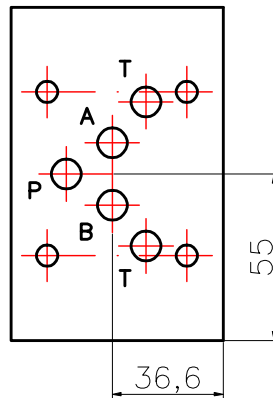
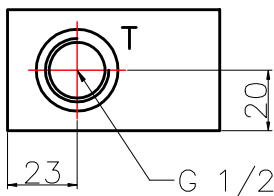
Werkstoff:  
Aluminium  
AlCuMg1 F38

Betriebsdruck:  
max. 315 bar

Symbol:



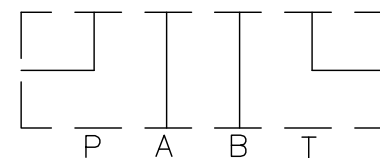
Einspeiseplatte NG10 in P 1/2"  
Bestell Nr.: 8100401



Einspeiseplatte NG10 in T 1/2"  
Bestell Nr.: 8100402

Sonderausführung auf Anfrage

Änderungen vorbehalten



Einspeiseplatte NG10 in P und T 1/2"  
Bestell Nr.: 8100403