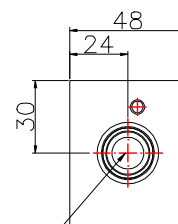
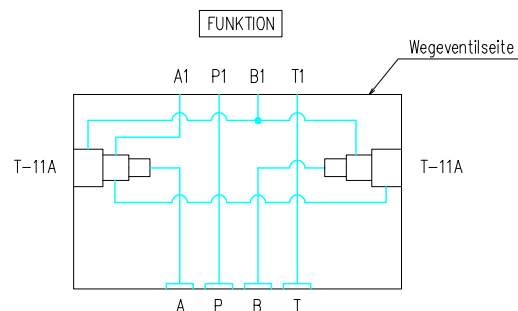
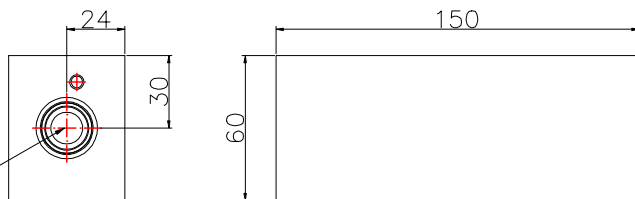
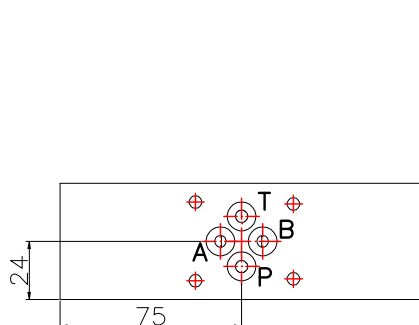


# Zwischenplatte NG06 Lasthalteventil

Typ

Lochbild DIN 24340 Form A / ISO 4401

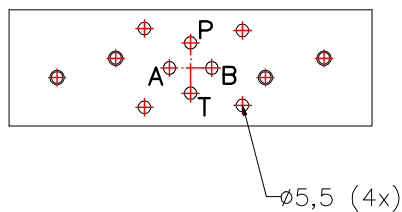
## Zwischenplatte NG06 Lasthalteventil Sun T-11A



incl. O-Ringe  
4 Stk. 9,25x1,78

←T-11A Einschraubventilbohrung  
M20x1,5 -6H

←T-11A Einschraubventilbohrung  
M20x1,5 -6H



Material  
Aluminium  
EN AW 7075 T651

Betriebsdruck  
max. 420 bar

Bestell-Nr.: